



# Senior Newsletter



September 2010

Orene Traylor, Counselor A-K  
Leisa Simons, Registrar  
Keri Mahan, Secretary/Receptionist

Nancy Parish, Counselor L-Z  
Rose Liggett, Registrar  
[http://bombers.k12.ar.us/hs/hs\\_counselors/index.html](http://bombers.k12.ar.us/hs/hs_counselors/index.html)

## ACT Testing

Test Date	Registration Deadline	(Late Fee Required)
September 11, 2010*	August 6, 2010	August 7 – 20, 2010
October 23, 2010	September 17, 2010	September 18 – October 1, 2010
December 11, 2010	November 5, 2010	November 6 – 19, 2010
February 12, 2011**	January 7, 2011	January 8 – 21, 2011
April 9, 2011	March 4, 2011	March 5 – 18, 2011
June 11, 2011	May 6, 2011	May 7 – 20, 2011

This year, ACT is requiring all students who test to register online. If you do not have access to a computer, the MHHS library is open until 5:30 p.m. on Wednesday. If this is not a convenient time for you to register, please see your counselor.

### Upcoming SAT Tests

<u>Date</u>	<u>Deadline</u>
Oct 9	Sep 10
Nov 6	Oct 8
Dec 4	Nov 5

**MHHS College Fair** will be held on Friday, September 17<sup>th</sup> from 9-11 a.m. in the Dunbar Auditorium. Parents of junior and senior students are welcome to attend. Thirty plus college and military recruiters will be in attendance to help our students will college planning.

Schedule –  
9-10 a.m. junior class  
10-11 a.m. senior class

### SAT or ACT? What TEST is for YOU?

Information provided by [www.kaptest.com](http://www.kaptest.com)

You might wonder why you have to choose between the SAT and the ACT--maybe one of the two is favored by the students in your school. Ten or 20 years ago, choosing which test to take wasn't even an issue. Until recently, the ACT was traditionally required by colleges in the midwest, and the SAT was the test of choice in the northeast and on the east and west coasts. But now an increasing number of students are taking the ACT, and the majority of schools in the United States now accept *both* SAT and ACT test results.

### How This Affects You

This increased acceptance of the ACT gives today's savvy students a strategic advantage. The SAT and ACT are *significantly* different tests, and in many ways, they measure different skills. So depending on your particular strengths and weaknesses, you may perform much better on one test than the other. As a result, many students embarking on the admissions process are now considering *both* the SAT and ACT--to figure out which test provides a better showcase for their abilities.

## What's the Difference?

Admissions officers and educators often describe the difference between SAT and ACT in these terms: the ACT is a content-based test, whereas the SAT tests critical thinking and problem solving. This perception is one reason many educators (off the record) express a preference for the ACT--because they believe that the ACT is closer to testing the "core curriculum" taught in most school classrooms. In fact, this contrast isn't exactly watertight. Many questions on the ACT test critical thinking, and there is a predictable range of material that's tested on the SAT. But the SAT and ACT reward different attributes, so performing well on each test can boil down to what kind of test taker you are.

Here are some of the factors that make the SAT and ACT very different breeds:

- The ACT includes a science reasoning test; the SAT does not.
- The ACT math section includes trigonometry.
- The SAT tests vocabulary much more than the ACT.
- The SAT is not entirely multiple choice.
- The SAT has a guessing penalty; the ACT does not.
- The ACT tests English grammar; the SAT does not.

Remember, both the SAT and ACT is important parts of your application, but they're only one of several factors--from your courses and grades to recommendations and your personal statement--that colleges consider.

## Test Snapshots

There are two major college entrance examinations administered in the United States today: the SAT and the ACT. Standardized tests like the SAT and ACT are designed to allow college admissions officers to judge all students by a common measurement. Scores on these tests can compensate for differences in high school curriculum, grade inflation, and quality of teaching. In addition, they serve as a reliable predictor of how you will perform academically in your freshman year of college.

### SNAPSHOT: SAT

The SAT is the most widely taken college entrance examination. It is designed to test your skill level in math, vocabulary, and reading comprehension. The test is divided into seven sections: 3 math, 3 verbal, and 1 experimental section. The math and verbal sections each have their own distinct question types, including quantitative comparisons, sentence completions, grid-ins, and more. The experimental section, used by the test developer to try out new questions, is not scored and can be either math or verbal. You will not know which section is experimental.

The SAT is scored on scale of 200-800 for both the math and verbal sections. The College Board sets the average for all test takers at 500 for each. A perfect score on the SAT is 1600. However, in recent years, fewer than 20% of all test takers achieve a math score of 600 or better. Fewer than 10% score higher than 600 on the verbal section.

### SNAPSHOT: ACT

The American College Testing Assessment (ACT) is designed to test your skill levels in English, math, reading, and science reasoning. On the test, you will have 2 hours and 55 minutes to complete a variety of multiple choice questions divided into four sections one for each tested subject area. The English, reading, and science sections each include several reading passages with anywhere from 5 to 15 questions per passage. The math section includes 60 questions each with 5 possible answer choices.

You will actually receive 12 separate scores on the ACT: 1 composite, 4 subject scores, and 7 subscores. However the composite or scaled score is the most important. It ranges from 1-36. Nearly half of all test takers fall in the 17-23 range.

### SAT vs. ACT

Until recently, the ACT was required by colleges in the Midwest, while the SAT was the test of choice for schools in the Northeast and on both coasts. Now, however, most schools accept both. This increased acceptance of both exams gives students a strategic advantage. The ACT is a content-based test, whereas the SAT tests critical thinking and problem solving skills. Depending on your particular strengths and weaknesses, you may perform significantly better on one test than the other. Regardless, you should check with each of your target schools before taking either exam.



## What should a senior do?

[August—December]

- \* Make sure you are meeting high school graduation and college admissions requirements [check your transcript carefully]. Different colleges may require different things. Be sure to contact your college choices to make sure you are meeting THOSE requirements.
- \* Confer with your counselor and other resources about your plans for the future.
- \* Attend senior conference (held during English IV during Sept./Oct.), college fairs (Sept.), and financial aid information nights (Oct.).
- \* Request admission applications, institutional scholarship, and financial aid applications from the schools you intend to apply.
- \* Arrange visits to the schools you are considering and schedule admissions interviews if required. Find out the costs of tuition, housing, books and supplies and any other fees for the school. (The earlier you pay your housing deposit—the better chances you have of getting better dorm accommodations.)
- \* Knowing the costs of the school, prepare a proposed budget for your freshman year in college.
- \* Search and apply for private scholarships.
- \* Take or retake the ACT or SAT. (Mountain Home only gives the November SAT.)
- \* Meet admissions, scholarship, and financial aid application deadlines and keep records of everything that you submit.
- \* Give recommendation forms to teachers, counselors, and other persons from whom you are seeking references for admissions and scholarship applications at least one month before they are due.
- \* If you are seeking athletic, band, choir, etc., scholarships from the school, make contact with the appropriate personnel from the schools you are considering.
- \* Prepare portfolios, auditions tapes, writing samples, or other evidence of talent required for admissions or for scholarships

### SCHOLARSHIP SITES –

- [www.fundmyfuture.info](http://www.fundmyfuture.info) - Arkansas Student Loan Authority's Free Scholarship Search
- <http://www.meritaid.com/> - A comprehensive directory of merit scholarships and academic scholarships from colleges across the country.

- Arkansas Academic Challenge – <http://gs.adhe.edu/>
- <http://www.outlawstudent.com/college-scholarships/>
- [http://www.college-scholarships.com/free\\_scholarship\\_searches.htm](http://www.college-scholarships.com/free_scholarship_searches.htm)

### COUNSELING SERVICES – ROOM 101 –

**STARTING ON TUESDAY, SEPTEMBER 14<sup>th</sup>, THE COUNSELOR'S OFFICE WILL BE OPEN UNTIL 5:00 P.M. IT WILL BE OPEN EACH TUESDAY THEREAFTER UNTIL 5:00 P.M. TO ACCOMMODATE STUDENTS AND PARENTS WHO CANNOT GET IN TO SEE A COUNSELOR OR BROWSE OUR SHELVES DURING THE DAY.**



### **Don't let mornings drag you down!**

The annoying thing about mornings is that they arrive so early. Look on the bright side; you know they're coming, so you have plenty of time to prepare. The better prepared you are in the morning, the less likely you'll be to run late, miss the bus or (worst-case scenario) miss school altogether. To keep your mornings hassle-free and your attendance record spotless

- **Prep the night before.** Lay out your clothes, plan your lunch and load up your backpack
- **Know how you'll get to school.** Don't wait until the morning to make arrangements.
- **Get enough sleep** (about nine hours). Having a regular bedtime at a reasonable hour will help, too.
- **Don't squeeze in too much.** Just shower, dress, eat and go.

### **THINGS TO DO BEFORE TEST DAY!!**

1. Don't cram.
2. Study with a buddy.
3. Make flash cards.
4. Create a practice test.
5. Make a "study sheet."
6. Dress for success.
7. Eat breakfast.
8. Take the supplies you need.

## College Visits:

- 09/28/10 - University of Arkansas in Conference Room 201 - 11:00- 12:00
- 09/30/10 - Missouri University Science & Tech in Conference Room 201 - 11:00 – 12:00

## College News:

- **DRURY UNIVERSITY, SPRINGFIELD, MO** – Discover Drury Day, **October 16<sup>th</sup>, 2010**. At Discover Drury Day students will hear what's going on around campus. Students will meet the student affairs staff and ask current students about their Drury experience. They will visit with faculty, athletics and student life representatives, eat lunch in the Commons with Drury faculty, staff, and students, attend a mock class and connect with a Drury profession, and explore the beautiful campus with a student host. Register online at [www.drury.edu/discoverdrury](http://www.drury.edu/discoverdrury) or call Megan White at 1-800-922-2274 ext. 6960 or [mmatronewhite@drury.edu](mailto:mmatronewhite@drury.edu)
- **MISSOURI STATE UNIVERSITY – WEST PLAINS**, is having a career fair on **September 24, 2010** from 9:00 a.m. until 2:30 p.m. in the West Plains Civic Center Exhibition Hall, 110 St. Louis Street. For more information contact Pam Tate, Coordinator of Career Services and Campus Outreach at [ptate@missouristate.edu](mailto:ptate@missouristate.edu) or call 417-255-7230.
- **MISSOURI STATE UNIVERSITY, SPRINGFIELD, MO** is having an MSU Showcase on Saturday, **October 30, 2010**. This is a free event for high school seniors, transfer students and their families. This event will introduce you to all of the great things going on at MSU. Once you register online by RSVP by October 25<sup>th</sup>, they will send you a complete agenda for the events planned. [www.missouristate.edu/sc](http://www.missouristate.edu/sc)
- **UNIVERSITY OF CENTRAL ARKANSAS, CONWAY, AR** – Bear Facts Days – Saturday, September 18, 2010, Saturday, October 30, 2010; Friday, December 3, 2010; Friday, February 18, 2011; Saturday, March 12, 2011; and Friday, April 8, 2011 <http://www.uca.edu/admissions/bearfactsday.php>
- **UNIVERSITY OF CENTRAL ARKANSAS, CONWAY, AR** – College-Specific Bear Facts Days – Friday, October 1, 2010 College of Health and Behavioral Sciences and College of Natural Sciences and Mathematics; Friday, October 8, 2010 – College of Fine Arts and Communication and College of Business; and Friday, November 12, 2010 - College of Liberal Arts and College of Education <http://www.uca.edu/admissions/bearfactsday.php>
- **UNIVERSITY OF MISSOURI – COLUMBIA (MIZZOU)** Meet Mizzou Days offer many of the opportunities available during a regular campus visit, as well several additional sessions. These include an academic fair, residential life and financial aid sessions, student panels and departmental tours. No classes are in session during Saturday Meet Mizzou Days. –  
Saturday, September 18, 2010  
Saturday, November 6, 2010

Saturday, February 19, 2011

Saturday, April 16, 2011

Saturday, April 30, 2011

Black and Gold Days at Mizzou offer many of the opportunities of a regular campus visit. These dates are Friday, October 8, 2010 and Friday, October 22, 2010.

- **UNIVERSITY OF THE OZARKS, CLARKSVILLE, AR** – Saturday, November 13, 2010, Fall Preview Day! The best way to get a feel for a college campus is to see it in person. When you visit UO you will meet Ozarks' students and faculty, see the facilities and explore the local area – then you can judge for yourself if Ozarks is the right place for your college experience. Register online at [www.ozarks.edu/preview](http://www.ozarks.edu/preview). If you can't make it on the 13<sup>th</sup>, schedule your visit online at [www.ozarks.edu/visit](http://www.ozarks.edu/visit) or call EmmaLee Morrow, Campus Visit Coordinator at 1-800-264-8636 or [emorrow@ozarks.edu](mailto:emorrow@ozarks.edu)

## Upcoming Events:

- 1/13/2010 - University of the Ozarks Fall Preview Day. Register online at [www.ozarks.edu/preview](http://www.ozarks.edu/preview) or gain more information by contacting the Office of Admissions at 1-800-264-8636.
- 1/18/2010 – Meet Mizzou Day at the University of Missouri <http://admissions.missouri.edu/visit/special-events/meet-mizzou-day.php>



## Scholarship Deadlines:

**(Scholarship information can be located in the three notebooks on the front cabinet of the Counseling Department. Parents and students should visit our office frequently for current information)**

- 09/16/10 – Baxter County Fair Association Scholarship deadline – criteria for this scholarship include: a) must attend college or vocational school after high school; b) must have exhibited at least one year in the Baxter County Fair; c) Number of categories entered in the fair; d) number of activities involved outside the fair; e) GPA will be considered only in case of candidates being close in their point system; and f) must take a minimum of 12 credit hours per semester.
- 09/30/10 - QuestBridge is pleased to announce the launch of the 2010 National College Match program, which will help outstanding low-income students to gain admission and full four-year scholarships to leading colleges. Our 29 partners include many of the nation's top-ranked universities and liberal arts colleges, such as:

Amherst College, MIT, Pomona College, Princeton University, Stanford University, and Yale University. QuestBridge is a non-profit program. [www.questbridge.org](http://www.questbridge.org) an electronic download at [www.questbridge.org/access/educators](http://www.questbridge.org/access/educators).

- 10/08/10 – 1) United States Senate Youth Program – two student leaders from Arkansas will be selected to spend one week in Washington, D.C., observing the national government in action as delegates to the United States Senate Youth Program (USSYP). After conferencing with national leaders on Capitol Hill and at the White House, Supreme Court, Pentagon, and Department of state, each delegate is awarded a \$5,000 college scholarship. Complete rules and information <http://arkansased.org/parents/scholarships.html> or <http://www.usenateyouth.org> ; 2) AES Engineers scholarship application deadline. Criteria – student must submit an essay of no more than 1000 words in answer to one of the two questions posted on our site <http://www.aesengineers.com/scholarships.php>
- 10/15/10 – Washington University in St. Louis – Danforth Scholars Program. If you are a student who has a capacity for service and leadership, academic excellence, and one who will embrace the challenges of a rigorous academic curriculum, come by the counselor's office and let your counselor nominate you for the William H. and Elizabeth Gray Danforth Scholars Program.
- 10/30/10 – Horatio Alger Scholarship Application deadline – The Horatio Alger Association seeks to assist students who have demonstrated integrity, perseverance in overcoming adversity, strength of character, financial need, a good academic record, commitment to pursue a college education, and a desire to contribute to society.
- 10/31/10 – Coca-Cola Scholars Program application deadline – <https://www.coca-colascholars.org/cokeWeb/page.jsp?navigation=15> 11/1/10 - **Students ages 13-18**. If you are passionate about giving back to the community, have high academic ability, and have demonstrated the potential to lead others, this may an opportunity for you. **Nestle Very Best In Youth and HOBY** have entered into a partnership to recognize young people who are making a positive difference in lives other than their own. <http://verybestinyouth.nestleusa.com>
- 11/2/10 - The 2011 seniors will be able to start applying thru the YOUniversal Scholarship system at [www.adhe.edu](http://www.adhe.edu) starting on November 2, 2010. Please make sure that students submit the application no later than February 1, 2011, to be considered for the Governor's Scholars Program and no later than June 1, 2011, to be considered for any other ADHE scholarship

program for which the student may qualify, including the Academic Challenge Scholarship.

- 01/01/11 – Mizzou - George C. Brooks Scholarship application deadline. Are you eligible? Students from ethnic groups that have been historically underrepresented in higher education (African-American, Hispanic and Native American) are eligible for this scholarship. Seniors must have an ACT of 25 (1130 SAT CR+M). See MHHS Counseling Services for more information.
- 1/13/11 - Current information for the 2010-2011 application for the University-Wide Current Student Scholarship program will be available on January 13, 2010. Also, students will be able to apply for the University-Wide Current Student Scholarship program on this date. Ben Gray Scholarship for students having a minimum 3.2 gpa. Preference given to applicants who will major in a professional field such as engineering, science, IT, finance, accounting, education or library science, with lowest preference given to applicants majoring in fine or liberal arts. Preference will also be given to student with demonstrated financial need.
- 01/15/11 – Arkansas JCI Senate Scholarship application deadline
- 02/01/11 – ADHE Governor's Scholars Program deadline [www.adhe.edu](http://www.adhe.edu)
- 02/15/11 – Dr. Seuss's Oh the Places You'll Go! College Scholarship application deadline.
- 04/20/11 - Fellowship Cumberland Presbyterian Church Joyce Cook Memorial scholarship application deadline

**Check the Scholarship Notebook in Counseling Services, Room 101 often. Scholarships come in frequently and do not always make it in to the newsletter because of arrival date.**



## College/University/Technical School SPOTLIGHT –

### ❖ **Arkansas State University – Jonesboro, AR**

John Carroll is the new Admissions Recruiter for Arkansas State University! A-State offers a wide variety of institutional scholarships. Your seniors that complete the admissions process by December 1<sup>st</sup>, 2010, and are admitted will be reviewed by our scholarship office without the need for any additional scholarship applications. This year ASU will not begin awarding our institutional scholarships until mid-

December. Arkansas State University has also made a change in their admission standards. To receive admission to Arkansas State University for the fall of 2011, a student must score 19 or higher on the ACT and must have at least a 2.5 high school grade point average.

- ❖ **University of Missouri- Columbia, MO** So you want to be a Tiger? Follow these steps: 1) Visit Mizzou and take a campus tour. 2) Apply online at [admissions.missouri.edu](http://admissions.missouri.edu). If you don't have Internet access, call 1-800-225-6074 for a paper application or visit the MHHS counselors' office, they may have one. 3) Request that your high school transcript – and any college transcripts that you may have – be sent directly to the Office of Admissions at the University of Missouri, 230 Jesse Hall, Columbia, MO 65211 visit – [admissions.missouri.edu/apply](http://admissions.missouri.edu/apply). In September, apply for admission. Remember to send the \$50 application fee. In October, residence hall information will be sent to students who have applied for admissions. In December, scholarship applications are due for incoming freshmen. Meet Mizzou Day is September 18, 2010!

- ❖ **The Salon Professional Academy** – located at 4619 JFK Blvd., North Little Rock, AR 72116, (501) 753-2400 OR [admission@tspalittlerock.com](mailto:admission@tspalittlerock.com) – The Salon Professional Academy is a beautiful, quality educational facility. It includes a spacious salon, nail area, skin care department, student lounge, classroom, and offices. The sponsorship of **The Salon Professional Academy** by **Redken** creates a synergy that will lead SPA in making cosmetology history. The academy has fulfilled the missing piece they needed to set the bar for professionalism in their industry. **Redken** is their brand identity, a high performance product and their liaison to higher education. They provide a program called **Train the Trainer** for their educators, which is facilitated by their Master Performing Artist throughout the year. Redken creates a powerful fusion of talent that they want their students to feel from the first week of school until the day they graduate. The students can put their skills to work with an outstanding curriculum in a beautiful atmosphere designed by Peter Millard, NYC.

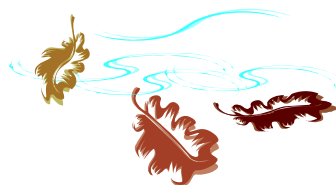
- ❖ **University of Central Arkansas – Conway, AR** - Jonathan Vest is the new Assistant Director of Admissions and recruiter for our area. If you have any questions, you can contact Jonathan by phone or e-mail 501.450.5109. You can even find him on Facebook to communicate. A new part of the admission application process is the implementation of an application fee of \$25. Currently, students can apply but will not be able to pay the fee online just yet. Please let your

students know they are welcome to send us a check made payable to the Office of Admissions at UCA. 201 Donaghey Ave. ,Conway, AR 72035



## **MATH TUTORING**

Mondays- Kathy Wham Room 198 3:30 – 4:30 pm  
Thursdays-Carol Wegerer Room 503 6:30 – 8:00 pm



## **COUNSELORS' Corner**

**Right now** the seniors need to ----

1. Get online and research the college(s), technical school(s), military, etc. of their choice
2. Make application for admission and scholarships **as soon as possible** (they can make application to more than one tentatively and then choose one later)
3. Recognize the deadline dates for enrollment and scholarship(s) for these facilities **BUT** know that the earlier a student makes application the better. *Many colleges have told us that their money will be disbursed on a first-come first-serve and the money will be gone before the actual deadline date!*
4. Visit with your counselor if you have specific questions before the conference.
5. The library will be open until 5:30 p.m. on Wednesday to accommodate any student who needs to make online applications
6. A counselor will be available until 5 p.m. on Tuesday afternoon.

Mrs. Traylor meets every Wednesday morning in the library 7:55-8:55 to share information related to the ACT practice site and will assist students in logging on and/or practicing for the test.

If you would like to be on an e-mail list to receive announcements and/or news related to the counselor's office, please e-mail Nancy Parish at [nparish@mtnhome.k12.ar.us](mailto:nparish@mtnhome.k12.ar.us) or Orene Traylor at [otraylor@mtnhome.k12.ar.us](mailto:otraylor@mtnhome.k12.ar.us) .